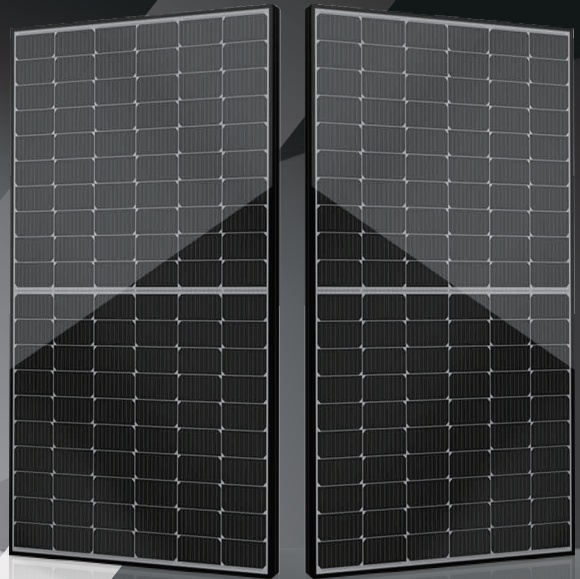


SIII SERIES

Multiple upgrades were forged into one







360-375_w



● SIII SERIES

Seraphim redefined the high-efficiency module series by integrating 166mm silicon wafers with multi-busbar and half-cut cell technologies. Seraphim panel combined creative technology effectively and extremely improved the module efficiency and power output.

● KEY FEATURES

-  Less mismatch to get more power
-  Less power loss by minimizing the shading impact
-  Competitive low light performance
-  3 times EL test to ensure best quality
-  Ideal choice for utility and commercial scale projects by reduced BOS and improve ROI.
-  **PVEL** Outstanding reliability proven by PVEL for stringent environment condition :
 - sand, acid, and alkali, hail stones,
 - 2400pa wind load and 5400pa snow load.
 - Anti-PID

● QUALITY SYSTEM

ISO19001 / ISO14001 / OHSAS18001

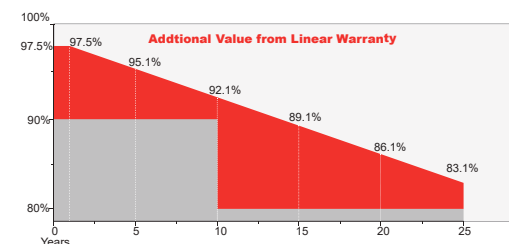
● PRODUCT CERTIFICATION



● INSURANCE

PICC

● WARRANTY



15
YEARS

Guarantee on product material and workmanship

25
YEARS

linear power output warranty



JIANGSU SERAPHIM SOLAR SYSTEM CO., LTD

Add: No.1-2, HengyaoRd, HenglinTown, Wujin District, 213000, Changzhou, China
 Tel: +86-519-69699879 Fax: +86-519-88786181 Email: info@seraphim-energy.com

Electrical Characteristics

Module Type	SRP-360-BMB	SRP-365-BMB	SRP-370-BMB	SRP-375-BMB
	STC	STC	STC	STC
Maximum Power at STC (Pmp)	360	365	370	375
Open Circuit Voltage (Voc)	41.2	41.4	41.6	41.8
Short Circuit Current (Isc)	11.16	11.26	11.34	11.41
Maximum Power Voltage (Vmp)	34.2	34.4	34.6	34.8
Maximum Power Current (Imp)	10.53	10.62	10.70	10.78
Module Efficiency at STC(ηm)	19.76	20.04	20.31	20.59
Power Tolerance	(0~3%)			
Maximum System Voltage	1000 VDC			
Maximum Series Fuse Rating	20A			

STC: Irradiance 1000 W/m² module temperature 25°C AM=1.5;

Temperature Characteristics

Pmax Temperature Coefficient	-0.35 %/°C
Voc Temperature Coefficient	-0.28 %/°C
Isc Temperature Coefficient	+0.05 %/°C
Operating Temperature	-40 ~ +85 °C
Nominal Operating Cell Temperature (NOCT)	45±2 °C

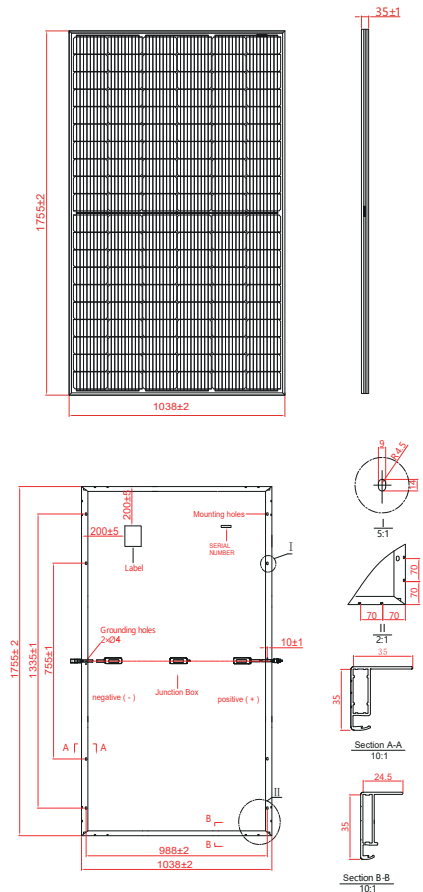
Mechanical Specifications

External Dimensions	1755 x 1038 x 35 mm
Weight	19.5kg
Solar Cells	PERC Mono (120pcs)
Front Glass	3.2 mm AR coating tempered glass, low iron
Frame	Anodized aluminium alloy
Junction Box	IP68,3 diodes
Output Cables	4.0 mm ² , Portrait:255mm(+)/355mm(-); Landscape:1200mm
Connector	MC4 / 05-8
Mechanical Load	Front side 5400Pa/ Rear side 2400Pa

Packing Configuration

	1755 x 1038x 35 mm	
Container	20'GP	40'HQ
Pieces per Pallet	31+4*	31+2*
Pallets per Container	6	24
Pieces per Container	210	792

* 31+2 and * 31+4 pieces per pallet are the special packages which only suit for container transport.
For details, please consult SERAPHIM.



I-V Curve

